

## What goes well with a waffle?

The answer is simple : everything.

If you are not convinced, here are some examples in pictures:

My advice: if you plan to use sweet topping, it is better to use waffles that contain less sugar and can balance more easily with a sweeter tasting topping.

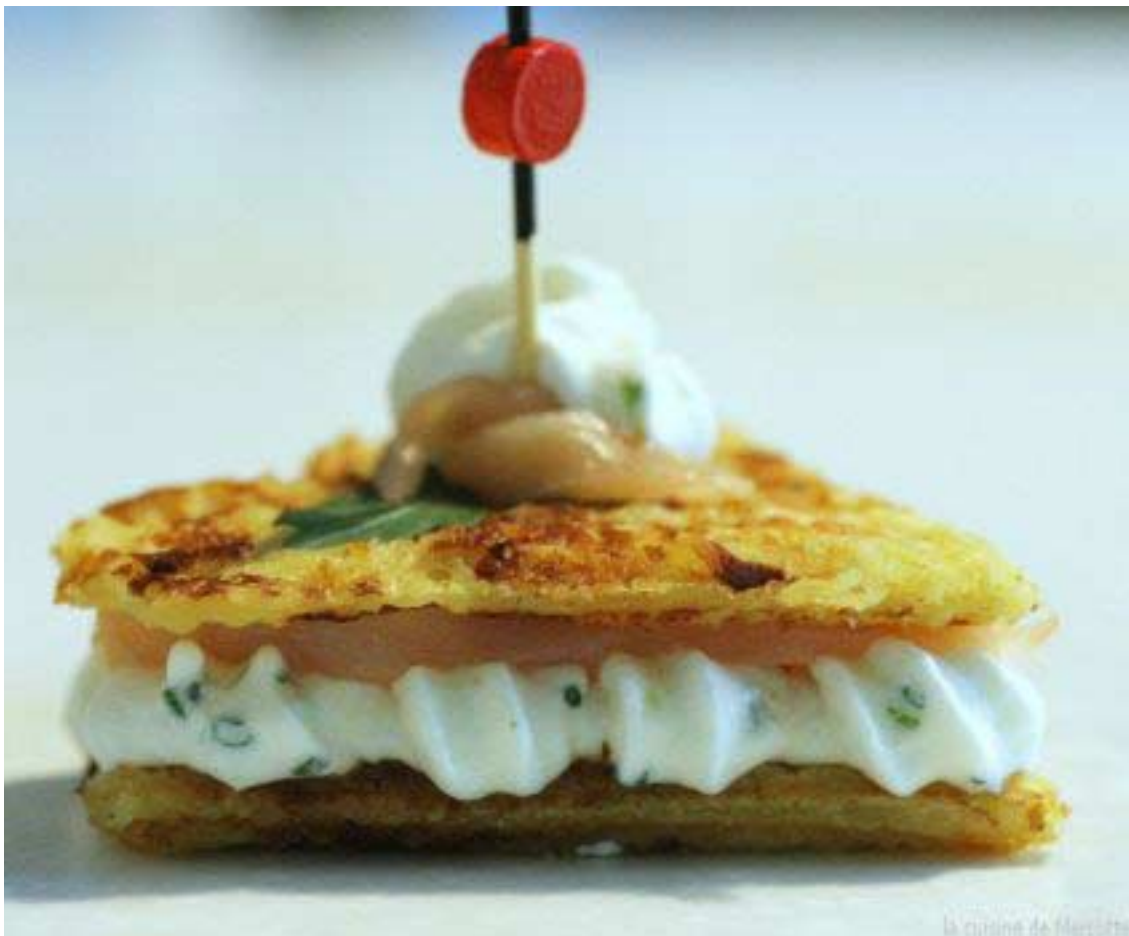
### Fruits



### Jam, jelly, relish



**Cream**



## Ice cream



## A mix of ice cream-ice-fruits-jelly:



**A mix of....everything (I let you spot the waffle... if you can!)**



**Waffle of Liège with syrup of Liège**

(picture to come soon)